

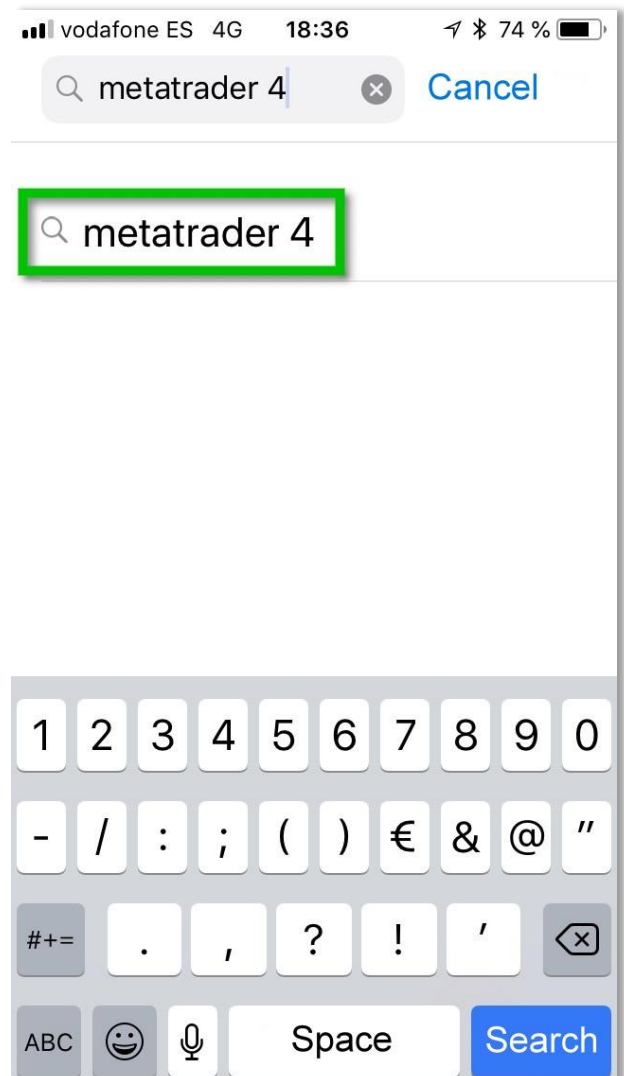
# kids VESTOR

THE APP FOR YOUR KIDS ACCOUNT!

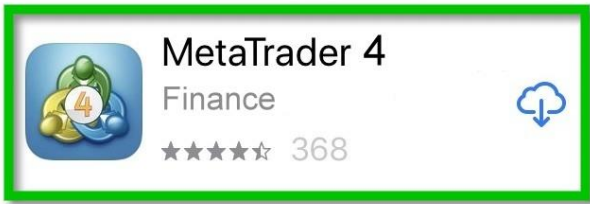
With the official MetaTrader 4 app, you can track the trading process of our FX:PATEA at any time. This is how easy it is to install the MetaTrader 4 app on your mobile phone:

## Step 1

Search in your App Store for the MetaTrader 4 app.

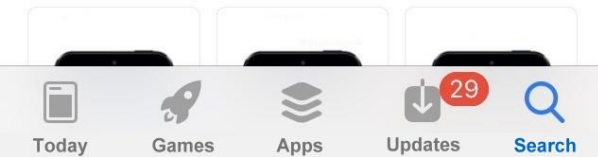
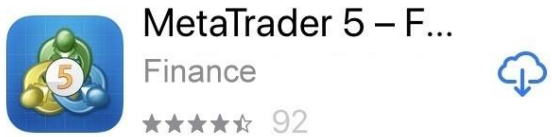


metatrader 4 Cancel



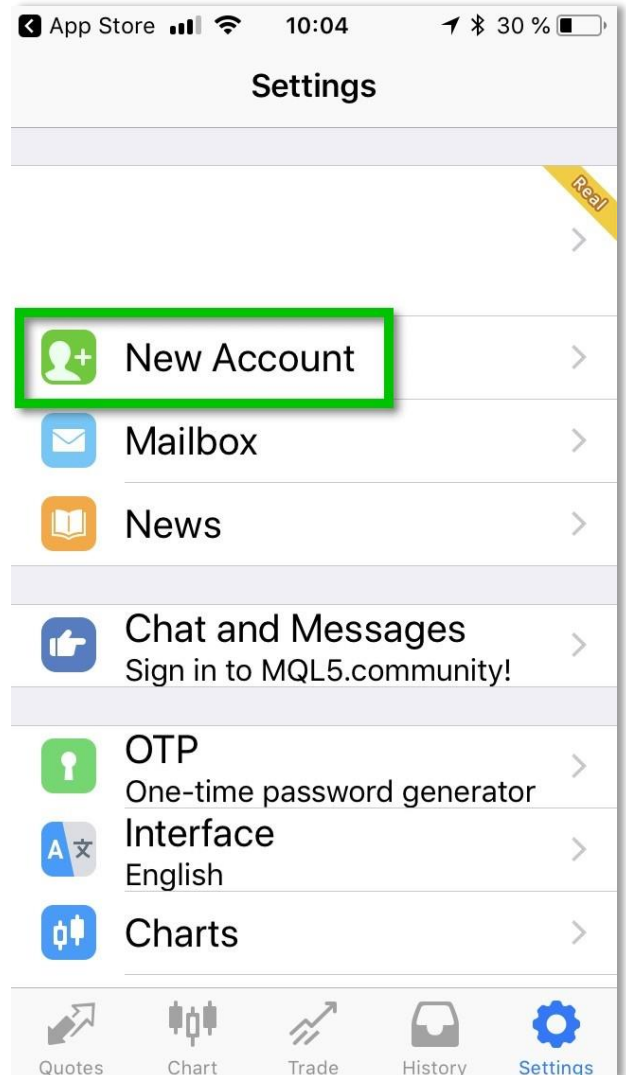
## Step 2

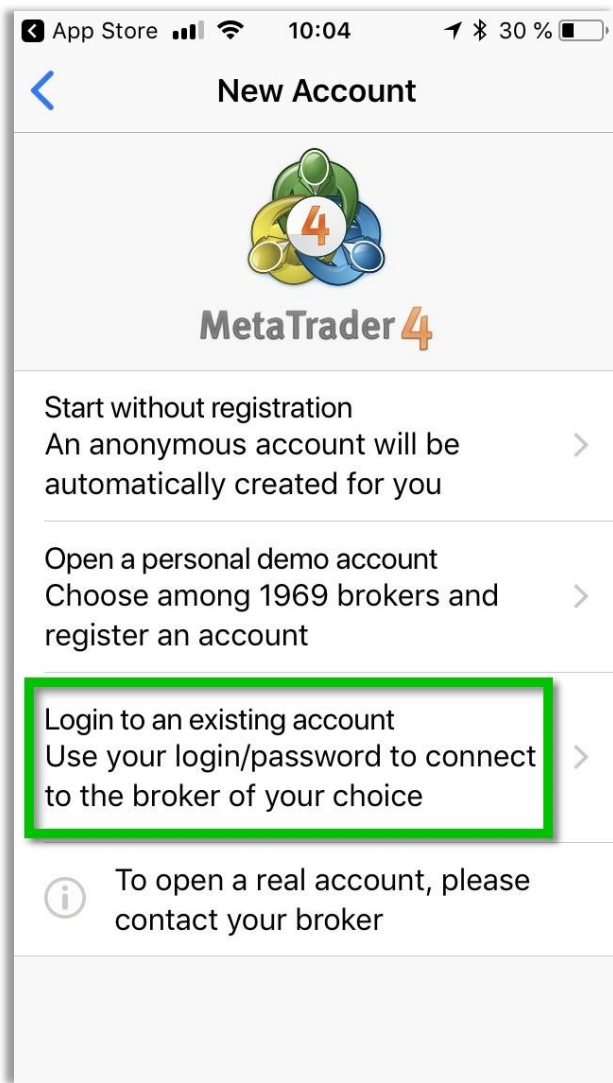
Download the app, install it and open the app on your mobile device.



## Step 3

Once you have opened the app, look for the menu item "Settings" and press the entry "New Account".



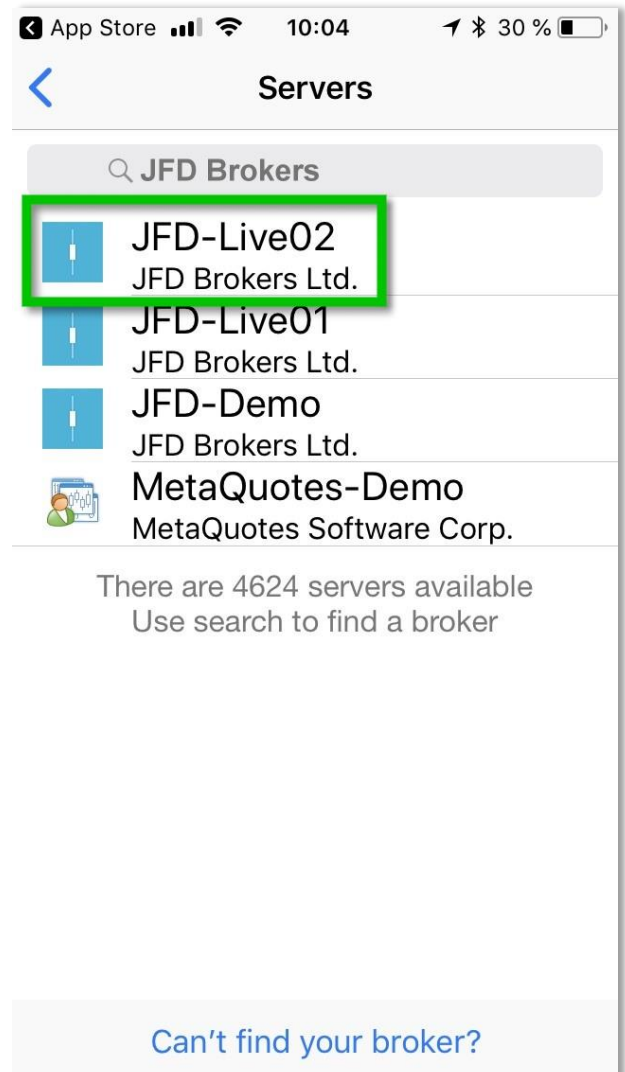


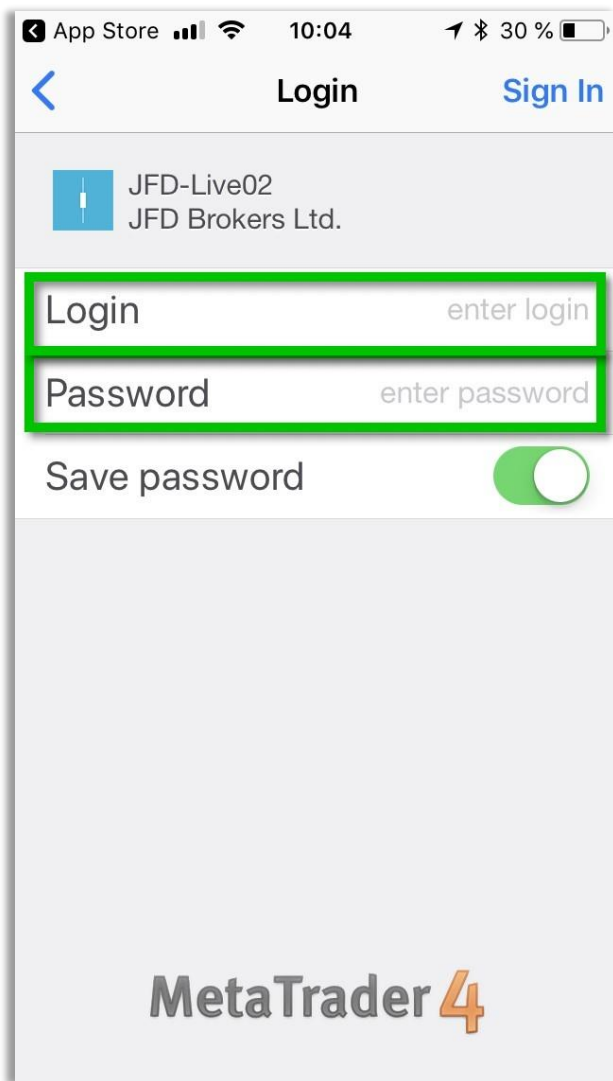
## Step 4

Select the entry  
„Login to an existing account...“

## Step 5

Type “JFD Brokers” into the search box.  
You will get a list of available servers.  
Please select "JFD-Live02"





## Step 6

Enter your 6-digit JFD Brokers account number in the "Login" field. In the "Password" field, enter the password that we sent you by e-mail after the account has been set up.

## Step 7

If the account number and the password were entered correctly, you can now follow the live operation of our FX: Follow PATEA under the entry "Trade".

Depending on the fluctuation of the foreign exchange market, in financial terms called "volatility", you will find more or less open transactions.

-13.05 EUR		+		
Balance:		3 561.51		
Equity:		3 548.46		
Margin:		46.19		
Free margin:		3 502.27		
Margin level (%):		7 682.23		
Positions				
<b>GBPUSD.U, sell 0.02</b>		<b>-5.10</b>		
1.29922 → 1.30220				
<b>GBPUSD.U, sell 0.04</b>		<b>-0.65</b>		
1.30201 → 1.30220				
<b>USDJPY.U, sell 0.02</b>		<b>-5.01</b>		
111.308 → 111.635				
<b>USDJPY.U, sell 0.04</b>		<b>-1.44</b>		
111.588 → 111.635				
Quotes	Chart	Trade	History	Settings

Do not be scared if your Kids Account often shows a negative balance! That is normal and part of the daily trading in foreign exchange. If no transactions are open or the sum of all transactions is positive, the background turns blue.

## The meaning of the entries:

- **Balance** is the available capital without open transactions.
- **Equity** is the capital currently available, including all outstanding transactions. If you were to close the account at that moment, the equity would be left over and become the balance.
- **Margin** is, similar to a deposit, a monetary security, which the Broker blocks for trading. It always refers to the sum of all open transactions and becomes larger, the more transactions are in negative book loss.
- **Free margin** corresponds to the amount available for trading after deduction of the required margin.
- **Margin level** calculates the available margin in percent.

## Any questions?

Should you have any further questions, we are happy to assist! Please write to our friendly Support Team: [support@inveus.com](mailto:support@inveus.com)